



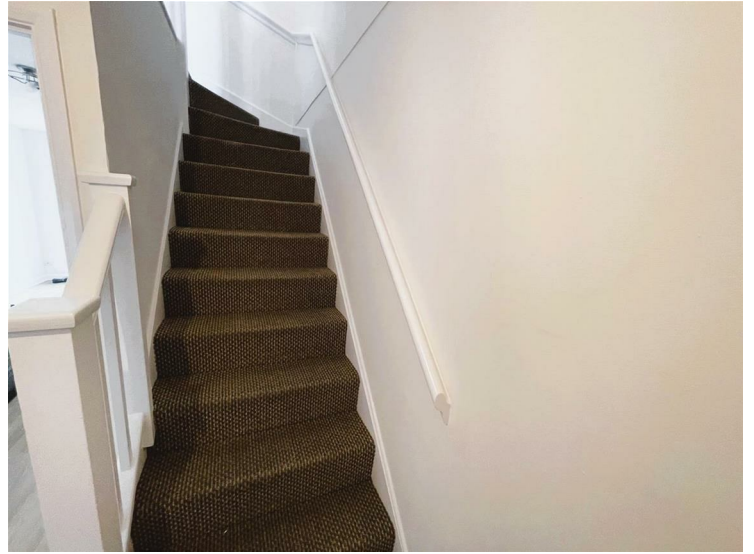
Heathfields Court, Hounslow, TW4 5BS

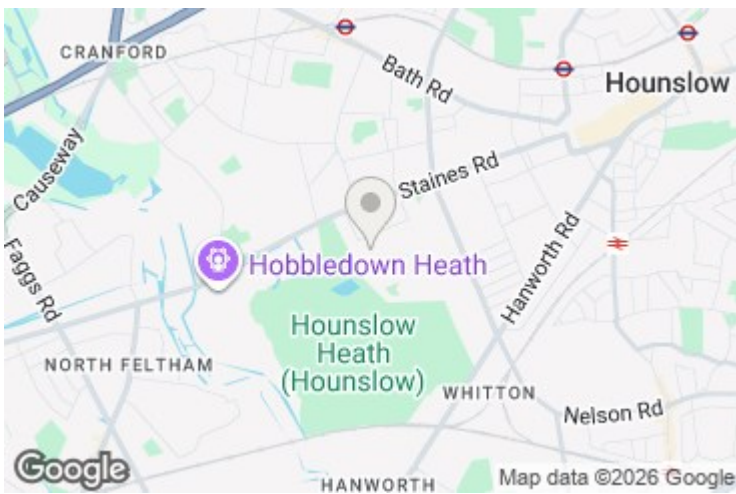
£1,800 PCM

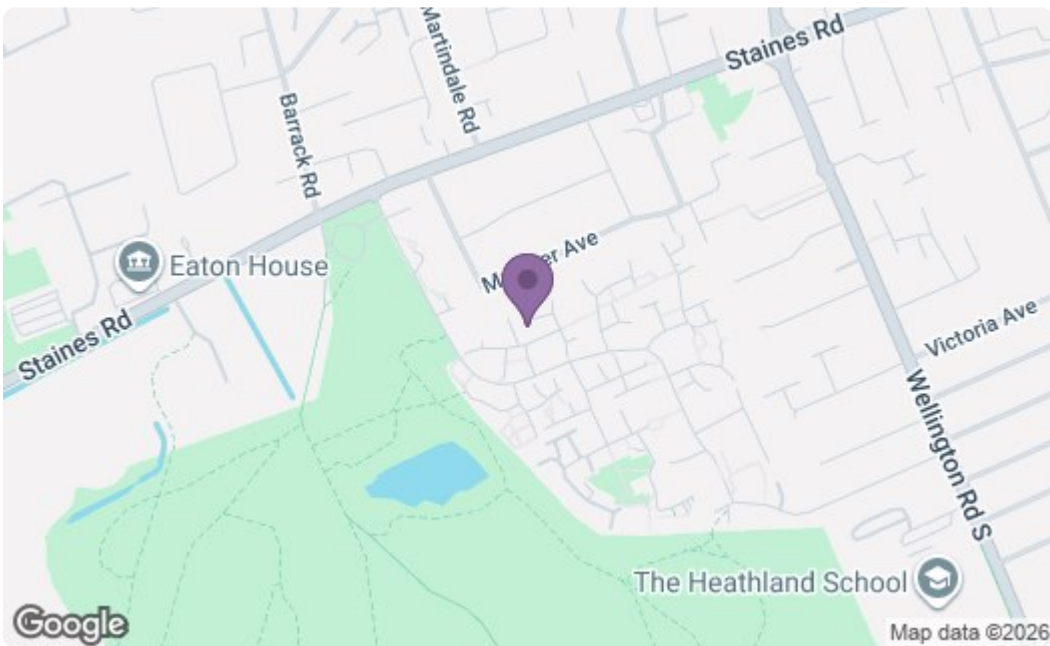
A newly refurbished two-bedroom end-of-terrace home, ideally located in a popular residential area with convenient access to local shops, schools, and transport links. The ground floor offers a lounge/diner and a modern fully fitted kitchen. On the first floor the property comprises two well-proportioned bedrooms and a contemporary bathroom suite. Externally the home benefits from a private rear garden and off-street parking to the front. Offered unfurnished and available immediately, this property is perfect for tenants seeking a well-presented home in a convenient location.



A partner of
The Guild Of Professional Estate Agents
with a network of over 700 independent estate agents

Associated Office: 121 Park Lane, Mayfair, London W1K 7AG t 020 7318 7075







Energy Efficiency Rating		Current	Potential
Very energy efficient - lower running costs			
(92 plus) A			
(81-91) B			
(69-80) C			
(55-68) D			
(39-54) E			
(21-38) F			
(1-20) G			
Not energy efficient - higher running costs			
England & Wales		EU Directive 2002/91/EC 	
Environmental Impact (CO ₂) Rating		Current	Potential
Very environmentally friendly - lower CO ₂ emissions			
(92 plus) A			
(81-91) B			
(69-80) C			
(55-68) D			
(39-54) E			
(21-38) F			
(1-20) G			
Not environmentally friendly - higher CO ₂ emissions			
England & Wales		EU Directive 2002/91/EC 	

A partner of
The Guild Of Professional Estate Agents
 with a network of over 700 independent estate agents

Associated Office: 121 Park Lane, Mayfair, London W1K 7AG t 020 7318 7075